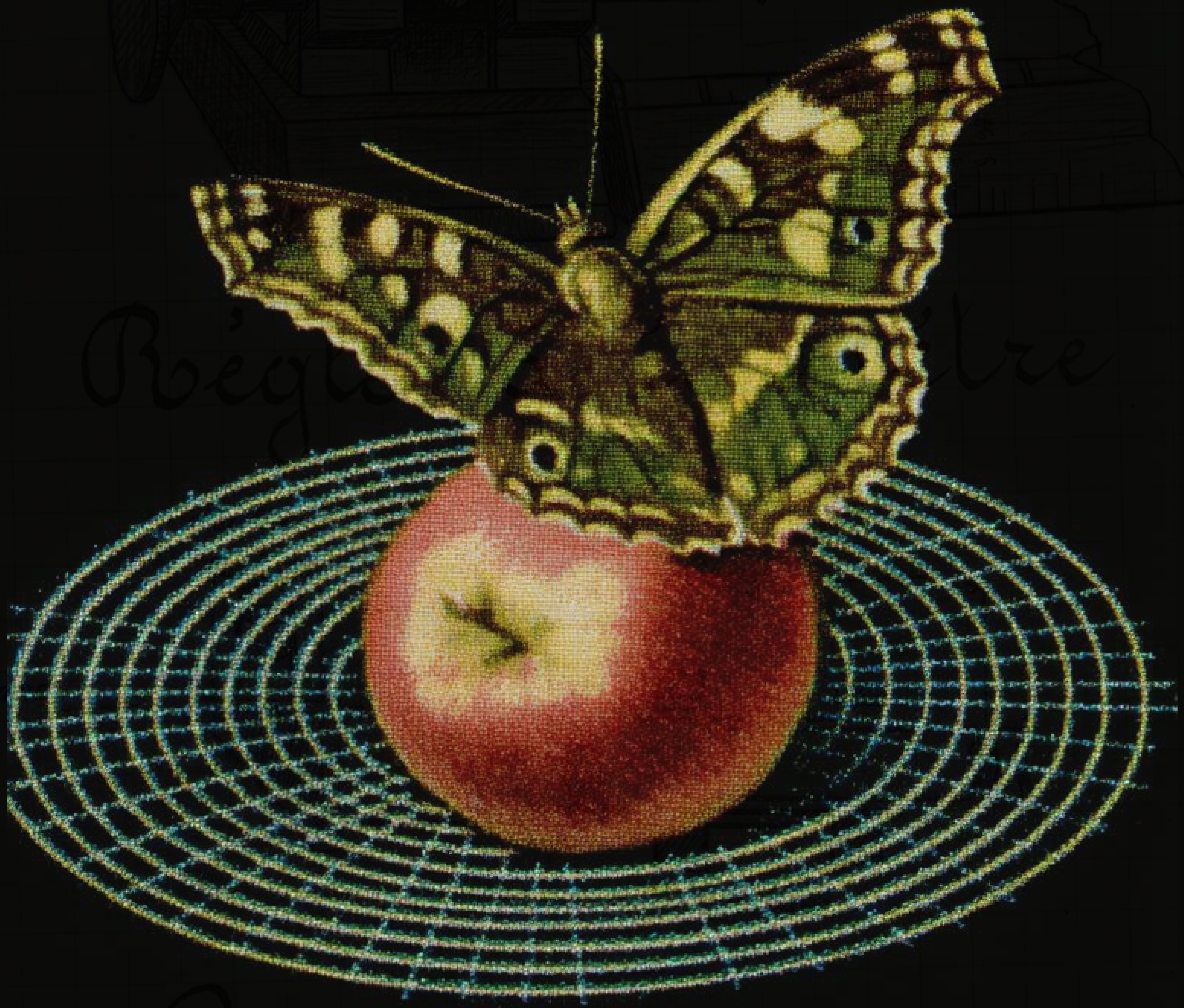


이외들

10EDLE

Yesterday's Tomorrow
어제의 내일



최첨단의 낭만을 향해 한정된 상상력으로 완전히 다른 낯선 세계를 꿈꾸며.
Small dreams. Strange worlds. Ultra-modern longing.



Yesterday's Tomorrow

We look back on our favorite day from school: Science Day.

The thrill of spending the entire day building a model aircraft, the flutter of excitement just before its first flight. The quiet tension of soldering a radio circuit board, tightening the final screw and hoping it would work. The admiration we felt watching friends compete in the science kit assembly contest, and the utopian future we once painted with watercolor.

This collection is inspired by those childhood dreams, when we dared to believe in the impossible and chased romantic ideals, reimagined through fractals, emotional robots, modular assembly, and sleek streamline forms.





Fig 1. Modular jacket

Fig 2. The inspirations

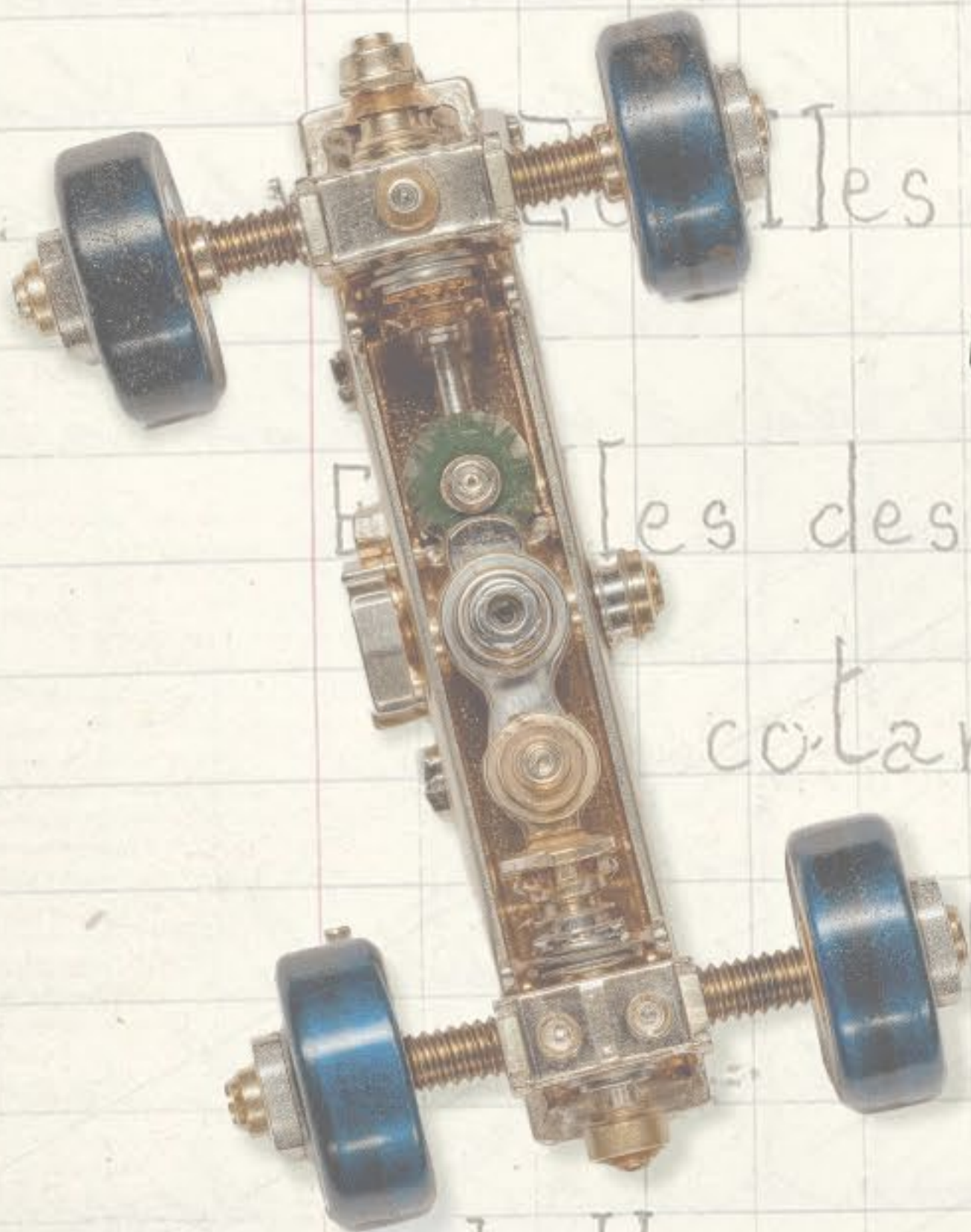


Fig 3. Modular pants



Fig 4. Rocket-shaped slit



Fig 5. Rocket-shaped slit

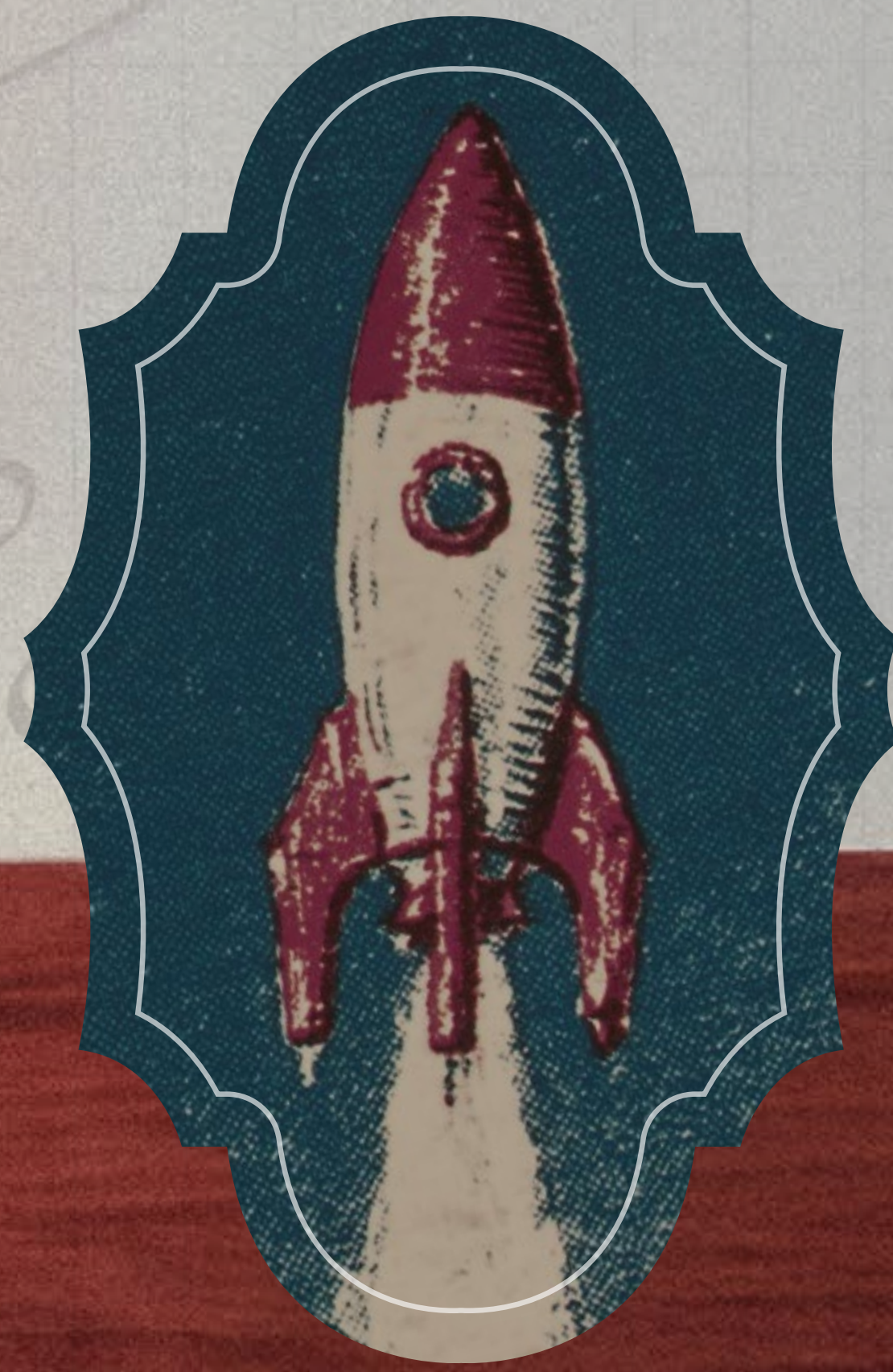


Fig 6. The inspiration



Fig 7. Shirt with Streamlined Panel Appliqué

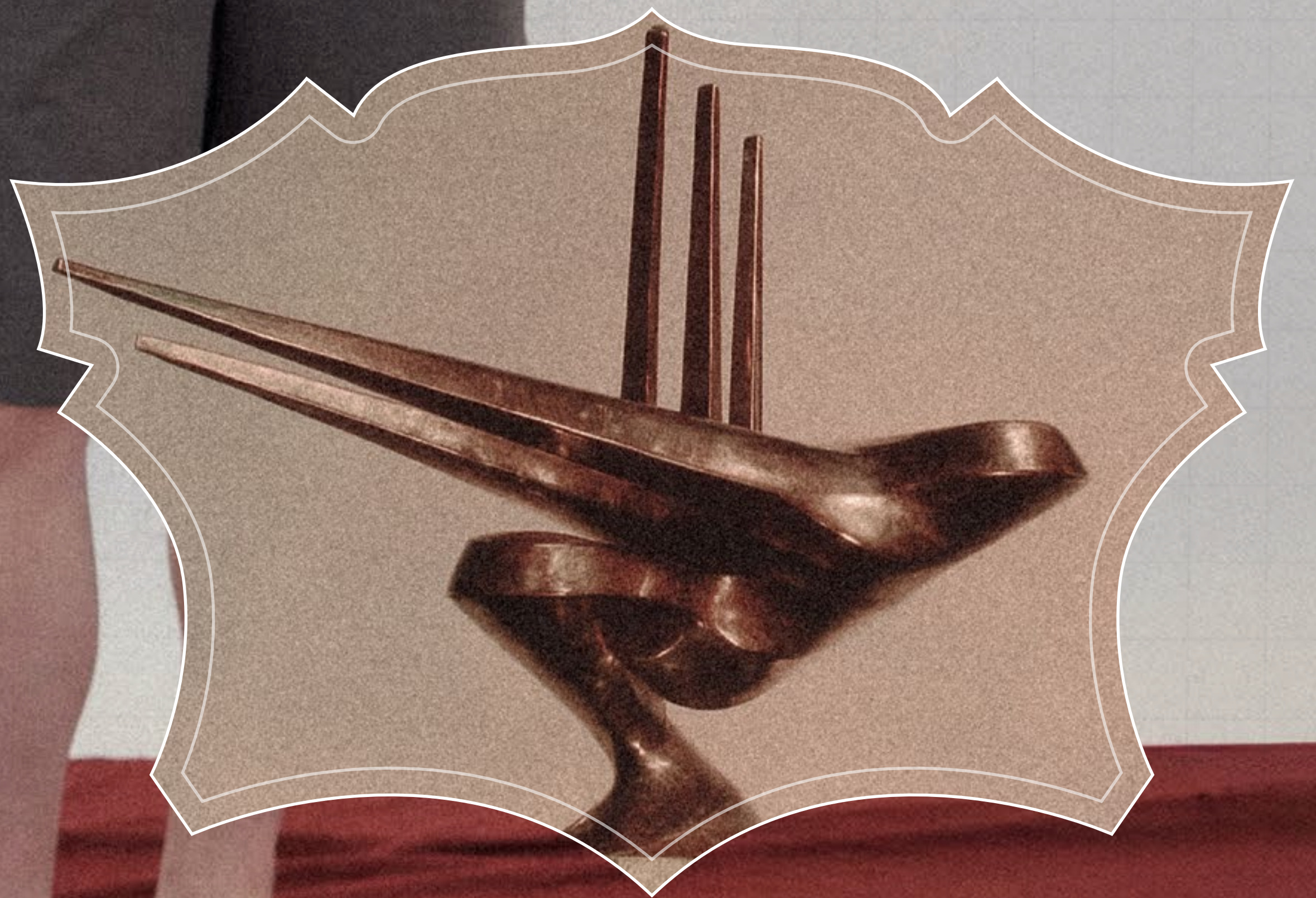


Fig 8. The inspiration - Streamlined Sculpture

Fig 9. Assembled T-shirt &
Streamlined Panel Appliqué Skirt



Fig 10. Contact Moment



Fig 11. Defying Gravity



Fig 12. The Birth of Gravity



Fig 13. Free Fall



Fig 14. Streamlined Panel Appliqué Shorts



Fig 15. The inspiration -
Sierpiński triangle



Fig 16. The knit structure

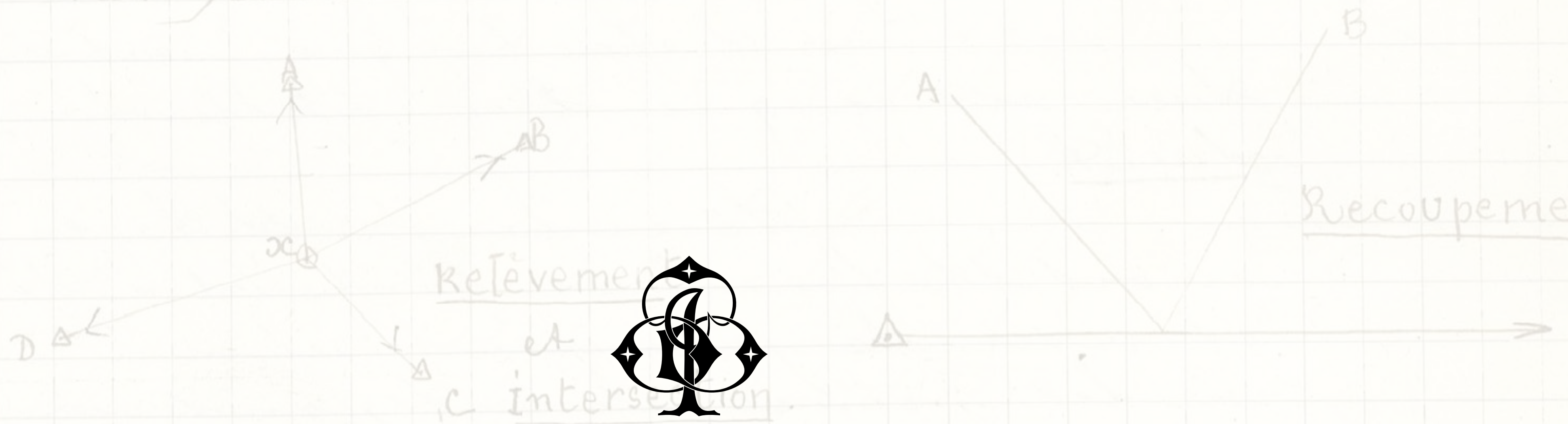


Fig 17. Streamlined collar

Fig 18. The inspiration

Le relèvement consiste à déterminer la position d'un point x en stationnant en ce point et visant d'autres points connus A.B.C.D.

L'intersection consiste à déterminer la position d'un point x au moyen de visées faites sur ce point en stationnant en des points connus A.B.C.D.



이외들
IOEDLE

서울시 노원구 상계로5길 19 대광빌딩 5층

5F Daegwang bldg., 19, Sanggye-ro 5-gil, Nowon-gu, Seoul, Republic of Korea

contact@ioedle.com

+82 2-933-7296

instagram @ioedle @ioedle_bum

ioedle.com

JH · HS · BK